

OPPORTUNITIES  
AT  
**TENINO**

ON THREE  
TRANSCONTI-  
NENTAL RAIL-  
ROAD LINES  
BETWEEN PORT-  
LAND AND PU-  
GET SOUND

ON  
THE PACIFIC  
HIGHWAY  
SURROUNDED  
BY A WEALTH  
OF NATURAL  
RESOURCES

970.779  
T255.  
1923

TENINO CITIZENS CLUB  
TENINO, WASH.

EP4

979,779

T 2550

1923

## FOREWORD

Back of every organization that succeeds there must be a strong purpose and the medium for carrying it out.

It is a natural consequence that the birth of a new need is followed by an agency to fill it.

To meet this need all cities and towns in every nook and corner of the country establish camping grounds open to tourists and those may desire an outing.

## Everyone Benefited

The tourist and those seeking a new location to build for themselves a home, and by coming in contact with mother nature, and the business brought by the tourist, even the average citizen comes in for a goodly share of the benefits for the help he plays host and thereby is a factor in getting the good-will of the tourists, an asset to any city or community—a value not computable in dollars and cents.

## REASONS WHY WE SHOULD GROW

Tenino, Washington, and surrounding country have many opportunities and advantages:

A wealth of timber and pure water.

Building Stone and quarries.

For its fine berries and poultry raising.

For its fine grains, dairying and stock.

For its fine vegetables of all kinds.

For its fine high schools and public schools.

For its fine Community Church.

For its fine railway services.

For its fine highway through the city.

You will find health and buoyancy in the atmosphere.



Pacific Highway and Bridge over Scattercreek near Tenino, Washington

## TENINO

### Thurston County Washington

A statements of facts concerning a wonderful country with its opportunities and advantages, prepared by A. W. Laningham secretary of Citizens' Club, Tenino, Washington.

In this necessarily very brief compilation we have kept the facts before us. "The Truth is good enough: There is no necessity for exaggeration."

## Publicity Department of the Tenino Citizens' Club Tenino, Washington

A. W. Laningham, Chairman and Secretary  
Dr. F. W. Wichman, Physician and Surgeon.

C. W. Cook, Mayor of Tenino and Real Estate Agent

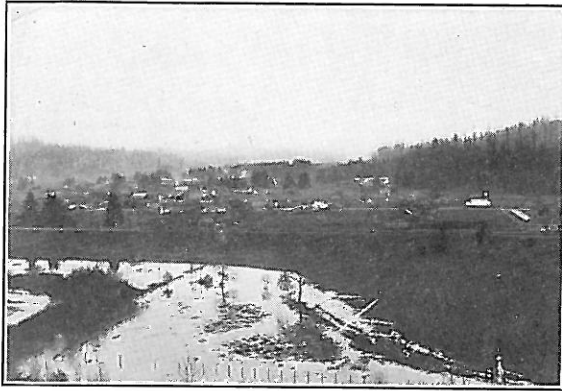
C. H. Kerbaugh, Cashier Citizens Bank.

Ed. S. Mayes, Manager of L. E. Titus Garage

C. S. Vanderslice, with Mutual Mill, Bucoda, Wash.

—who will give reliable information to anyone that is interested, if desired.

Tenino, Washington



Birdseye View of Tenino

## TENINO

**Thurston County, Washington**  
On Three Transcontinental Railways

Tenino is a thriving town of one thousand inhabitants, situated in a beautiful valley in the southwestern part of Thurston County, on the Pacific Highway. It is fifteen miles from Olympia, the capitol of the state, forty miles south of Tacoma, and one hundred miles north of Portland, Oregon; at the junction of the Northern Pacific and Great Northern railways with the Point Defiance line of the Union Pacific system and Northern Pacific railways.

The town was laid out and settled in the year 1873 when the Northern Pacific railroad was first built from Portland to Tacoma. The town of Tenino is quite extensively known for its great blue and buff sandstone beds which have furnished building material for its own construction and have helped greatly to build up Olympia, Tacoma and Seattle with magnificent and substantial buildings. The quarries and the productive, fertile valleys of the Skookumchuck River and Scatter Creek and Grand Mound Prairie, together with the saw and shingle mills have made it a splendid shipping point between Tacoma and Portland. The people are industrious, enterprising and intelligent. They have a splendid public school and the Union High School, employing thirteen teachers. They will erect a new high school building in the spring of 1923 to cost not less than \$50,000. They have a splendid bank with \$175,000 assets, a beautiful and well designed Masonic Temple which was erected in the year 1921. A new and commodious



Sussex, the business Street of Tenino, looking West—  
The Citizens Bank on the Corner

town hall of Tenino sandstone is now being erected. It has electric lights and water system. A community church, two newspapers and fraternal organizations are well represented. The Pacific Highway, all paved with hard surfacing, runs direct through the town.

### A Fine City Park and Tourist Camping Site

The town has one of the prettiest and most commodious parks and camping grounds two blocks south from the Pacific Highway, only three blocks adjacent to the center of the business district. The camping ground has space, light, water and wood, a good roomy building for shelter in case of storm, a stove to cook by, sanitary buildings and accommodations, with a naturally sloping and gravelly soil, covered with grass and a good carpet of fir needles and moss under foot and magnificent fir trees overhead, making it a delightful place to camp. The Tenino Citizens' Club and city officials will spare no pains to make visitors and tourists doubly welcome.



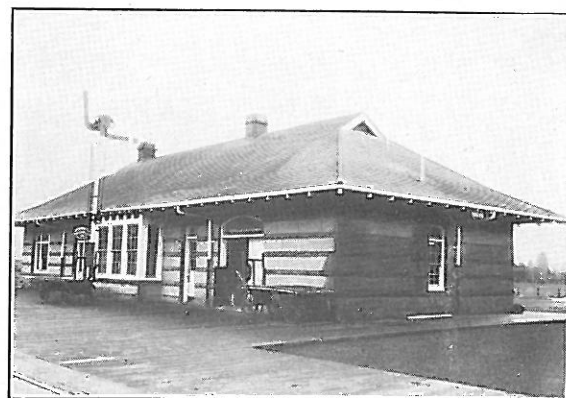


Sussex Street of Tenino looking East

### Grand Mound Prairie

Southwest the Grand Mound Prairie lies with Scatter Creek hugging the south foot-hills of the great level plateau of everal thousand fertile acres of sandy, gravelly soil, producing abundantly. It is especially adapted to strawberries, raspberries, blackberries, and most any other kind of berries. Potatoes and garden vegetables of all kinds are very successfully raised. This is also an ideal place for poultry raising which can be made very profitable. This section is being settled by thrifty people on five, ten, twenty and forty acre tracts. There are many good tracts of land for sale at reasonable prices and with good terms to suit the purchaser. The Pacific Highway is all finished with hard surface, running directly through this great level plateau or prairie, giving all access to a fine road.

But the task is one of great magnitude. Its accomplishment will depend largely on the co-operation of the people that settle in this section. And there is much to be done in preparing the way for an increased population, in providing for proper location of settlers. And we believe that there is splendid opportunities awaiting those who are looking for new homes.



Northern Pacific and Union Pacific (System) Depot at Tenino built from Sandstone quarried from her own quarries. A Fine Substantial Building.

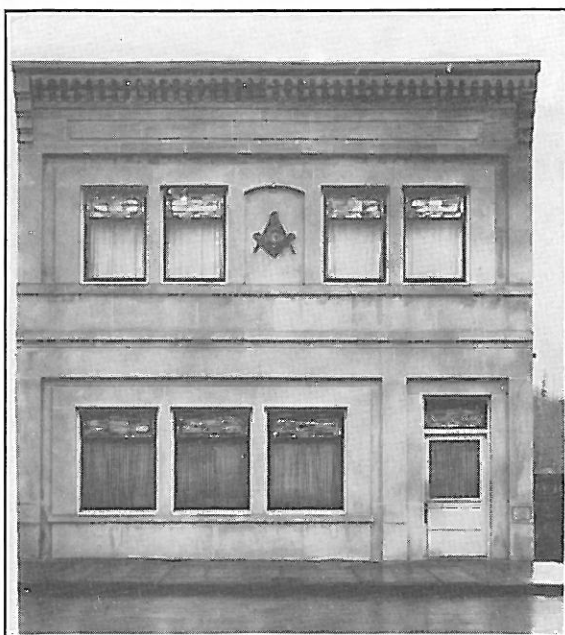
### Scatter Creek

Scatter Creek Valley lies northeast of Tenino, the Great Northern and Northern Pacific railways running down this valley. Much of the timber has been cut out and the land cleared. There is still considerable timber remaining in this section but it is rapidly disappearing. This land is known as logged-off land or stump land. The land cleared and brought under cultivation is very productive. Some of it can be bought at very reasonable prices and be settled on five, ten, twenty and forty acre tracts.

Everything that goes to make for successful dairying is to be found in the agricultural valleys and upland adjacent to the city of Tenino.

And to the man that has a desire to settle down on a little tract of land, and will work and try to improve his opportunities, he can make a success, and build for himself and family a good substantial home.

For in all this world of beauty  
There is just one Puget Sound.  
With its chain of deep-set harbors,  
Like a necklace ever sparkling  
On the breast of our great state.



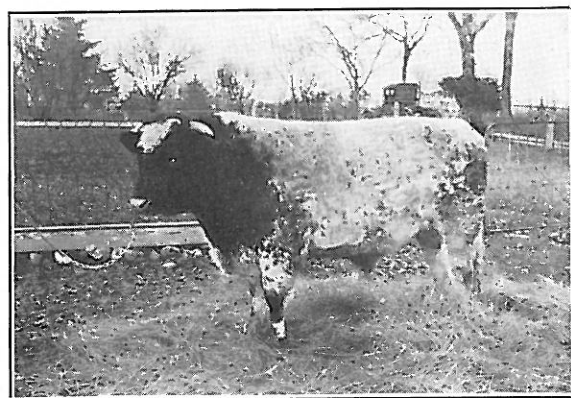
**Masonic Temple at Tenino**  
One of the Finest in the Northwest with a large Membership

### **The Climate**

Tenino enjoys a very agreeable climate throughout the year. There is very little freezing weather. From November first to April first is the heaviest rainfall. The annual precipitation is between forty and sixty inches with very little snow fall. The average dates of the first and last killing frost are October 28 and April 20, with about 180 growing days. Outdoor labor is scarcely interfered with at any time of the year. Tenino is a splendid business center for the surrounding country for miles in every direction.

### **Water**

In this county there is little area not drained by streams or springs while artesian water of excellent quality is usually obtainable at from thirty to 150 feet. In spite of the great rainfall there are places on the prairies where irrigation for a short period in the summer is an advantage, especially for orchards and garden truck.



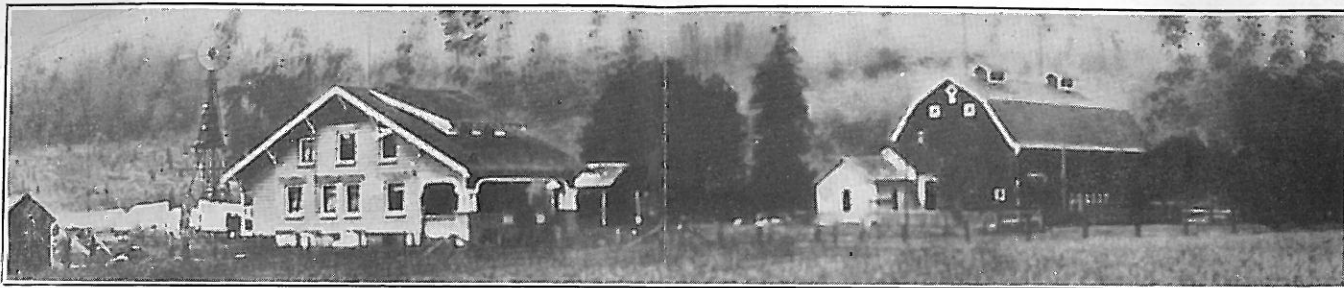
**McGuire's Bull**  
"Pure Bred International Champion 1921  
Shorthorn Bull"

### **Bee Business Profitable**

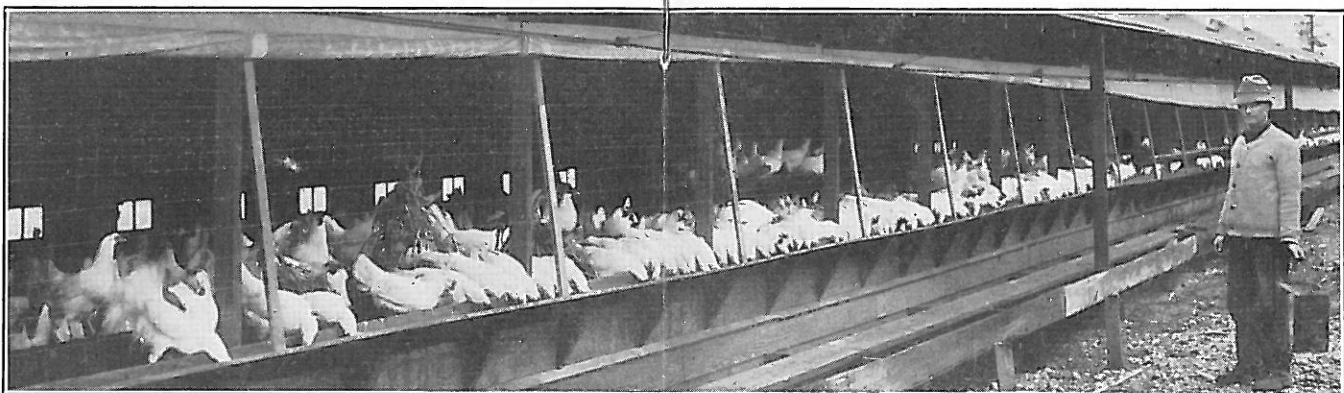
Nature generally indicates the things for which a country is especially adapted and from the results obtained this section is an ideal place adapted to the bee industry. The amount of rainfall does not make much difference, as the amount is very light in the flying or honey gathering season.

To give one concrete case to show the reader what can and has been done in this community:

Fred Mandary, an expert bee keeper, after seeking through five different states for an ideal location for bees, settled on a small place two and one half miles southeast of Tenino. He says that the reason for this choice is that here he is always sure of a crop of fireweed or white clover or both. In 1914 he bought twelve colonies of bees. He has made them pay for every dollar invested in them besides buying him his home and two automobiles. At present he has 140 colonies of purebred Italian bees. This season he had seven tons of fine honey, practically all of which was fireweed. The fireweed honey has never failed to take first prize wherever it has been exhibited. Honey, sweet honey. Fred Mandary at Tenino can give you all the information desired.



**J. B. Taylor's Farm 3 miles from Tenino—700 Acres of Land—with his herds of Purebred Holsteins**



**S. H. Clark's Poultry Ranch four miles from Tenino with his two thousand Purebred Chickens.**



**J. D. McGuire's residence three miles from Tenino. His farm consists of several hundreds of Acres.**





S. H. Clark and fine Cockerals at his Chicken Ranch 4 miles from Tenino.

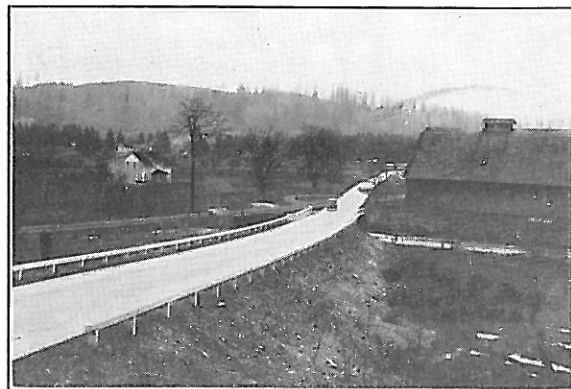
### Poultry Business is Profitable

Conditions in the territory in and around Tenino make it an ideal locality for the development of the poultry enterprise. A family on the end of one city lot with a small chicken house can, with little expense and labor, keep a small flock of fowls and have all the eggs for their family needs, and many times, have some to sell, that will materially help out on the family expenses.

The amount of land required for developing a profitable poultry plant depends upon how the plant is operated—whether fowls are to be confined to close quarters or to have practically free range. One or two thousand hens may be kept on one acre of ground, but the labor of care is greater and the danger of disease is much greater. One of the most essential things in successful poultry raising is a good, well designed, poultry house, well ventilated, kept clean and dry.

Grand Mound Prairie is one of the most ideal locations for successful poultry culture. The land is a sandy and gravelly soil and has good drainage, yet is fertile enough to hold a good sod and produce quick growing crops under cultivation.

It is entirely practicable to keep fowls successfully on clay soil, but such soil is more apt to become infected with disease germs and they require quite different treatment from the free and easy methods that are used on sandy soil. There are many good locations near Tenino that are available for the poultry business that can be bought on very reasonable terms to suit the



A. D. Campbell's residence and ranch on the Pacific Highway with bridge over Scatter creek, about half a mile from Tenino.

purchaser. Assuring anyone who may be interested in this line of industry the Citizens' Club of Tenino will render any help and information possible to anyone that may be interested.

### The State of Washington

The State of Washington is greatly diversified as to soils, natural resources and climate. The Cascade range of mountains divides the state into two great divisions, commonly known as Eastern and Western Washington.

The state has an area of 69,127 square miles, about 2,300 of which are water, and its greatest distance north and south is 238 miles. Puget Sound is truly a land locked sea. Beginning in the northern part of the state at the British Columbia line about seventy-five miles from the Pacific Ocean this great marvelous waterway extends in a generally southerly direction a distance of about one hundred miles into the heart of the state.

If one should attempt to follow its shore line, either on shore or by boat, he would need to travel about two thousand miles. At intervals along the Sound there occur splendid protected harbors upon which are located the large cities of Western Washington and which receive the largest ships that ply the waters of the mighty Pacific Ocean at their docks. There are also thousands of miles of navigable rivers and num-



**Pacific Highway along the banks of Scattercreek**

erous lakes. These have furnished a ready means of cheap transportation.

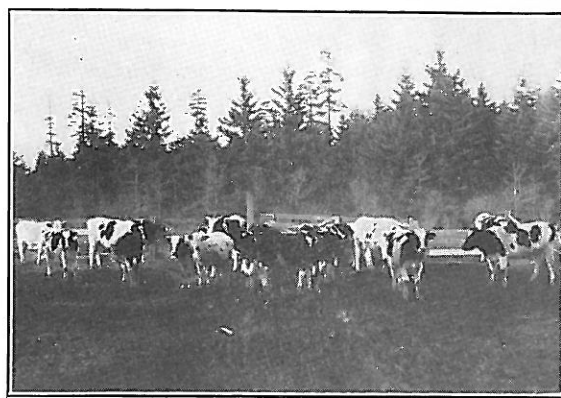
The mountains catch the moisture wafted in from the sea and send it leaping and bubbling down their sides, thus providing for the use of man a superlative amount of available water power.

But this is not all: These same mountain streams have made it possible for the farmer and city dweller to have an abundance of pure soft spring water for their use and comfort.

#### **TENINO, WASHINGTON**

Tenino, Thurston County, is located about seventy-five miles from the Pacific Ocean at an elevation of about one hundred eighty feet above sea level, and about sixty miles southwest of Mount Ranier, 14,408 feet, which with its majestic snow-covered summit towers far into the azure blue.

The average mean temperature is about fifty-one degrees—seldom ever one hundred. No mosquitoes—no venomous reptiles: children chase about in the woods with no thought of rattle snakes—no cyclones or hard winds. Terrific electrical storms that strike terror to men's hearts in many places do not disturb us.



**Some of J. B. Taylor's Fine Holstein Milch Cows—  
That are very valuable**

#### **Ofea Swamps and Around Clear Lake**

There are many fine farms which demonstrate the rich fertility of the hills and valleys that dot this part of Thurston county. Many more acres are waiting to be tilled and can be bought at very reasonable prices. The people of this vicinity are progressive and industrious. They believe in progress and are enthusiastic for development, not only for their children but for themselves as well. They will welcome with outstretched hands any settlers who may elect to come and abide among them.

We of the Tenino Citizens' Club and city officials will render any assistance, answer any inquiries, and give any information that we possibly can to those who may be interested.

By the Secretary of the Citizens' Club and Chairman of the Publicity Department.

#### **TENINO, WASHINGTON**

We've native small fruits doing fine,  
From waterfront to timber line.  
With clime to suit:  
We've berry farmers by the score,  
And locations good for hundreds more.  
We have Fruit.

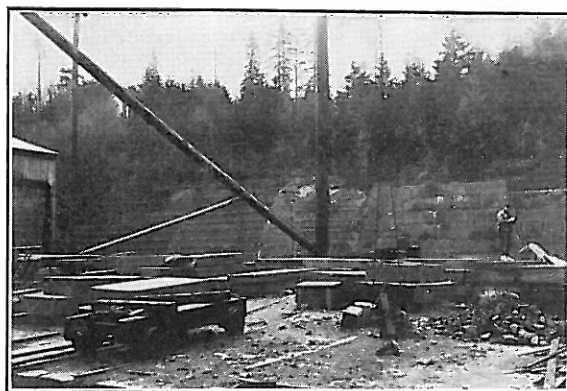




Dr. F. W. Wichman at his dam on Scattercreek for pumping water to his ranch for general use.

### Logged Off Lands

Owing to the low price and easy terms upon which logged-off land can be purchased they offer an opportunity to the settler who does not have much capital to purchase a home where in the course of time he will be able to make his living. It has been proven beyond any question that these lands when cleared are productive. dairying, poultry raising, fruit and berries all proving to be successful money makers on lands of this character. The problem of clearing has been the only drawback to settlement on logged-off lands, but the new process of land clearing now being presented by the Oregon Agricultural College through the use of the Zysset Stump Burner will enable the settler to clear his land at a minimum cost—there being practically no expense other than one's labor. As this method becomes more generally known, the successful development of logged-off lands will be greatly increased and everyone who has the desire to make his home on his own land will look to the logged off lands for the fulfillment of that desire. Weyerhaeuser Timber Company can give any information desired.



Tenino Stone Quarries  
Her vast Deposits of Fine Building Sandstone afford an inexhaustable resource for which she is justly famous

### Skookumchuck

Skookumchuck lies to the southeast of Tenino. This is a beautiful, fertile vally with the Skookumchuck river winding its way through the valley. This is one of the best sections that has been cleared of timber and stumps and brought under cultivation. It is the very best of bottom land and the soil is a sandy loom. The land is very productive, producing wheat, cabbage, carrots, turnips and all kinds of vegetables are raised in abundance. Dairying, poultry, fruit, berries and stock raising has become the strong industries. Horticulture is closely allied with agriculture in this section. There remains much fine timber to be cleared off the ground that will furnish fuel for all domestic purposes.

### Price of Land

Unimproved land—mostly logged off—is on the market in small and large tracts at from \$10.00 to \$50.00 per acre. Improved land, fenced, cleared and under the plow, may be purchased for from \$50.00 to \$100.00 per acre. Plenty of land suitable for intensified farming may be bought at very reasonable prices and terms.

The prices of land depend on location, condition of soil and amount of improvements made.



Pacific Highway near Tenino, Washington

### Offut Lake

Offut Lake—four miles north of Tenino and one half mile off the Pacific Highway—a beautiful lake of fresh, soft water about two miles long and one mile wide surrounded by a fine growth of timber. A most beautiful summer resort. A large pavillion and places of amusement—boats, fishing and all kinds of sports. Thousands of people visit this lake in the summer—an ideal camping place.

### Lakes and Rivers

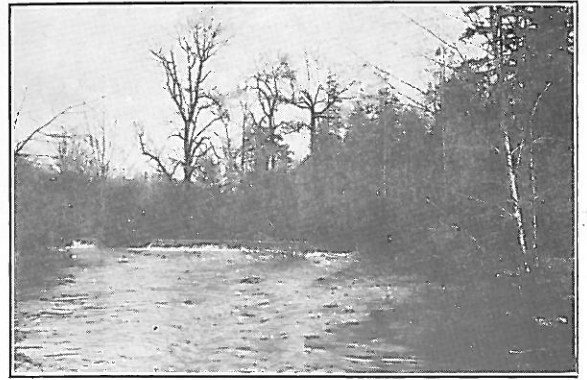
There are several lakes well stocked with fish and famous trout streams are common. Among these are the Skookumchuck and DeChutes which have their origin directly from Mt. Rainier.

Plenty of bear and deer and other wild animals may be found in the dense timber and wild ducks and geese on the lakes.

Bucoda, four miles south of Tenino, has a large saw mill and shingle mill, employing a large crew of men and doing a general commercial business. There is also a coal mine. The town is quite a prosperous place.

Tono, lying seven miles southeast of Tenino, is a coal mining town of some three hundred population, on a branch of the O.- R. R. Mines owned by Washington Coal Company, and they have a saw mill employing several men.

Maytown, on the C. M. & St. P Ry, is eight miles north-west of Tenino. Has a large saw mill and doing a general commercial business.



A beautiful waterfall on Scattercreek near Dr. F. W. Wichman's ranch on Grand Mound.

### Are You Planning a Trip?

If you are arranging a trip to the southwestern Washington you need this little booklet. It will give you many items of valuable information you will need and contains one of the most complete maps of the Pacific Highway across the state, from British Columbia to Portland, Oregon, showing many of the cities and towns and country that will be of interest to you. The Citizens' Club of Tenino and city officials extend to all tourists and visitors a cordial welcome to our fine city park and camping grounds, where you will have a fine grove and conveniences. Every auto is welcome.

## TENINO CITIZENS' CLUB

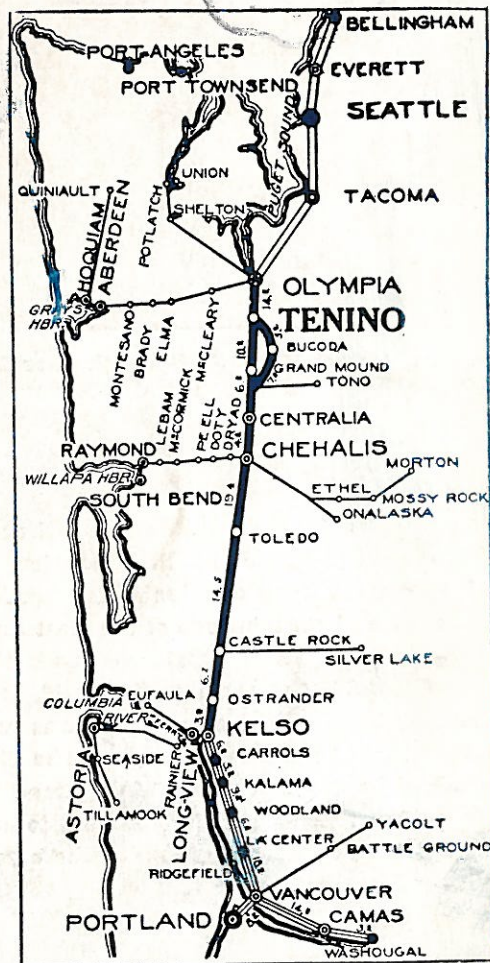
TENINO, WASHINGTON

March 1st, 1923

2012.0.289

# Pacific Highway

## AND SIDE ROADS



**BEAUTIFUL PARK**

FOR TOURISTS AND VISITORS  
WITH GOOD ACCOMMODATIONS

WELCOME TO OUR CITY

**CITIZENS CLUB**

TENINO, WASHINGTON

Tenino Independent